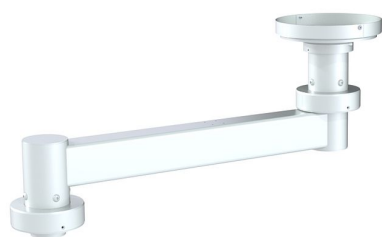




## HMA M250



- Couleurs standard
  - Tubes: RAL 9016 (Blanc signalisation)
  - Composants: RAL 9016 (Blanc signalisation)
  - Couleurs spéciale sur demande

---

Type de protection IP 54 DIN EN 60529

---

## U-EXTENSION



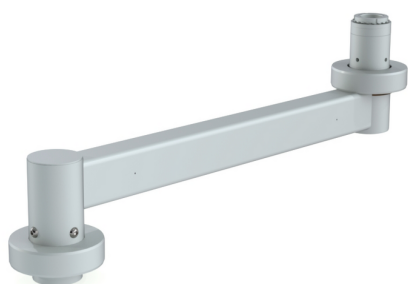
## SUPPORT MURAL



## FIXATION DE PLAFOND



## Z-EXTENSION



Z-Extension